

## SWAMALA

### Monograph No. – 070009 ver 3.0

Issue No: 03

Amendment No : 02

Date of Issue: 28/10/2016

Amendment Date : 31/07/2020

Text Reference : Ayurvedic Proprietary Medicine

Shelf Life: 3 years

#### Description

Brown to Chocolate brown semi-solid mass with sweet and slightly sour taste.

#### Loss on Drying at 105°

Not more than 14 % w/w

#### Ash content

Not more than 1 % w/w

#### Acid Insoluble Ash

Not more than 0.2 % w/w

#### pH (1% aqueous solution)

3 - 4

#### Elemental Assay

##### Gold (Au)

Not less than 0.2 mg/10 gm

##### Silver (Ag)

Not less than 0.5 mg/10 gm

##### Iron (Fe)

Not less than 5.0 mg/10 gm

##### Calcium (Ca)

Not less than 4.0 mg/10 gm



#### Thin Layer Chromatography

##### Solvent system

Toluene : Ethyl acetate : Formic acid : Ethanol  
( 6 : 4 : 0.3 : 0.4 )

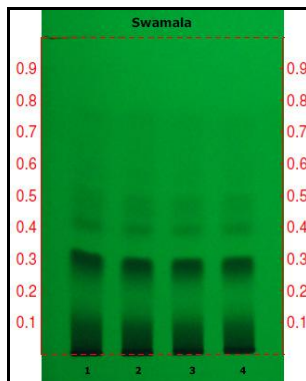
##### Details

Solvent of Extraction – Methanol

Solvent front – 90 mm

Total No. of Major spots – 4

Detection – Under UV at 254 nm

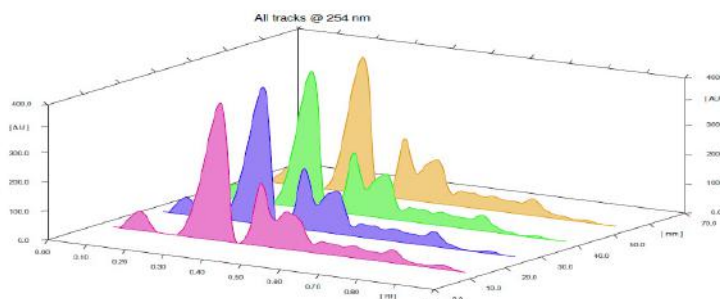


##### Major Spots

##### Colour

##### Approx. Rf.

1	Black	0.30
2	Gray	0.41
3	Light Gray	0.49
4	Light Gray	0.74



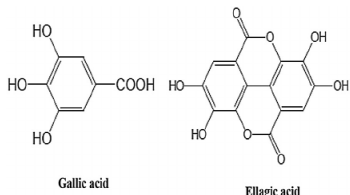
3D Peak Display of Swamala at 254 nm

**Confidential - photocopy prohibited**

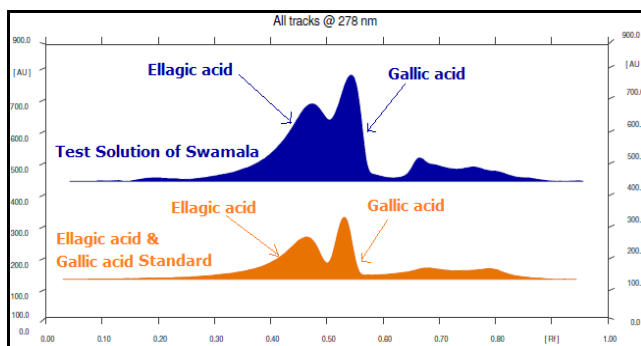
Note : † : These extra tests can be performed on every batch at extra cost. Tests can be ascertained on request.

## HPTLC Profile <sup>†</sup>

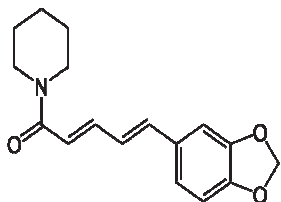
### i) Total Polyphenols (as Gallic acid & Ellagic acid)



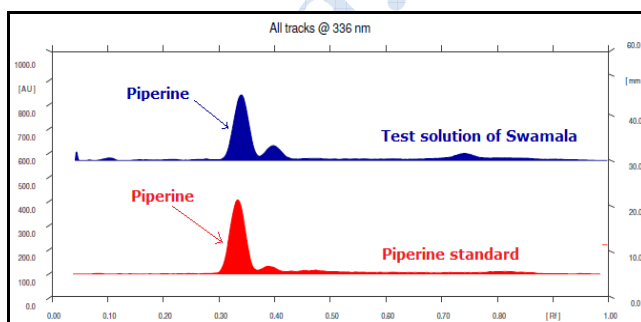
When examined in the range of 200 nm to 400 nm, the test solution shows absorption maxima at about 290 nm for Gallic acid & 278 nm for Ellagic acid corresponding with Gallic acid & Ellagic acid standard.



### ii) Piperine



When examined in the range of 200 nm to 400 nm, the test solution shows absorption maxima at about 336 nm corresponding with piperine standard.



<b>E. coli <sup>†</sup></b>	Absent/g
<b>P. aeruginosa <sup>†</sup></b>	Absent/g
<b>Salmonella sp. <sup>†</sup></b>	Absent/g
<b>Staphylococcus sp. <sup>†</sup></b>	Absent/g
<b>Total Microbial plate count (TPC) <sup>†</sup></b>	NMT 10 <sup>5</sup> c.f.u./g
<b>Total Yeast &amp; Mould count <sup>†</sup></b>	NMT 10 <sup>3</sup> c.f.u./g
<b>Pesticide Residue <sup>†</sup> (OC+OP)</b>	Complies as per API
<b>Aflatoxins B1,B2,G1,G2 <sup>†</sup></b>	Complies as per API