

## BRUHAT VATA CHINTAMANI RASA (TABLET) (PREMIUM)

Monograph No. – 0900054 ver 3.0

Issue No: 03

Date of Issue: 09/09/2017

Text Reference : Bharat Bhaishajya Ratnakar 4/6985

Amendment No : 02

Amendment Date : 25/11/2021

Shelf Life: 5 years

### Description

Brown to dark brown colour, round convex coated tablet having SDL mark on one side.

### Loss on Drying at 105°

Not more than 5 % w/w

### Friability

Not more than 1 % w/w

### Disintegration Time

Not more than 60 min.

### Hardness

Not less than 1.5 kg/cm<sup>2</sup>

### Thickness

3.0 ± 0.5 mm

### Diameter

6.5 ± 0.5 mm

### Average weight

157 mg ± 7.5 %

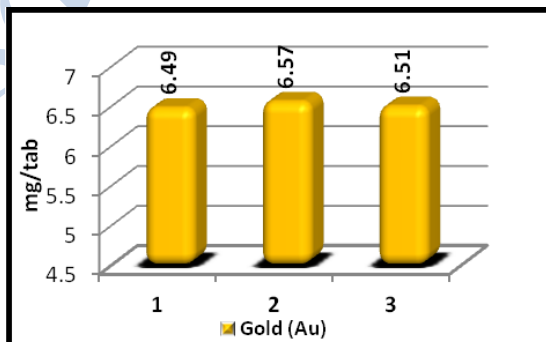
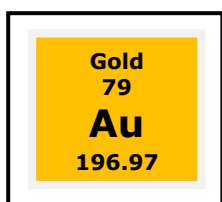
### Uniformity of weight of 20 tablets

Not more than two of the individual weights deviate from the average weight by more than 7.5 %.

### Elemental assay

#### Gold (Au)

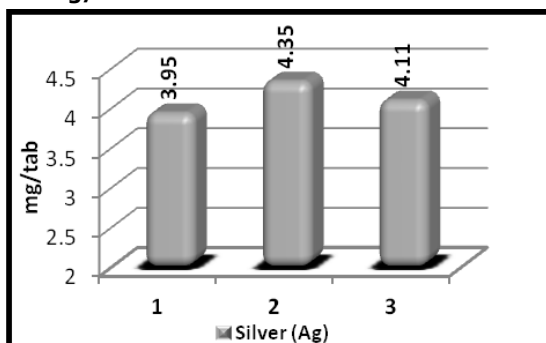
6.0 – 8.0 mg/tab



Graphical Representation of Gold Content in Bruhat Vata Chintamani Rasa (Batch to Batch Consistency) by ICP-OES

#### Silver (Ag)

3.0 – 4.5 mg/tab



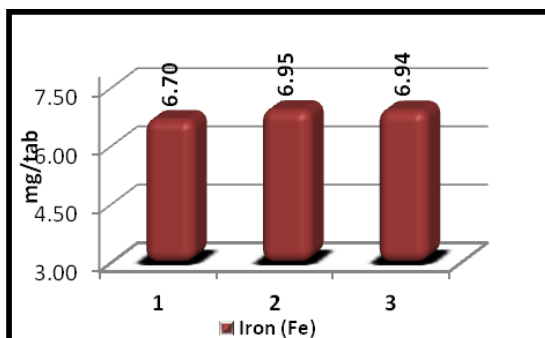
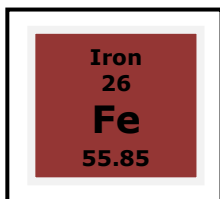
Graphical Representation of Silver Content in Bruhat Vata Chintamani Rasa (Batch to Batch Consistency) by ICP-OE

Confidential - photocopy prohibited

Note : <sup>†</sup> : These extra tests can be performed on every batch at extra cost. Tests can be ascertained on request.

## Iron (Fe)

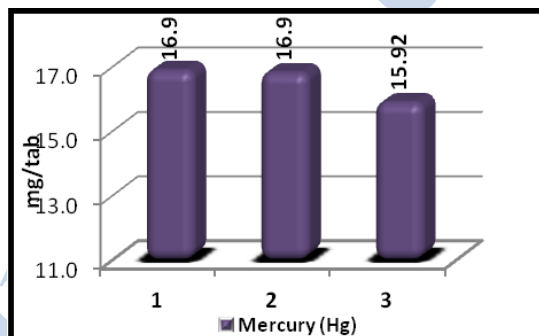
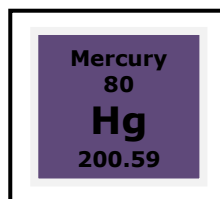
6.0 – 9.0 mg/tab



Graphical Representation of Iron Content in Bruhat Vata Chintamani Rasa (Batch to Batch Consistency) by ICP-OES

## Mercury (Hg)

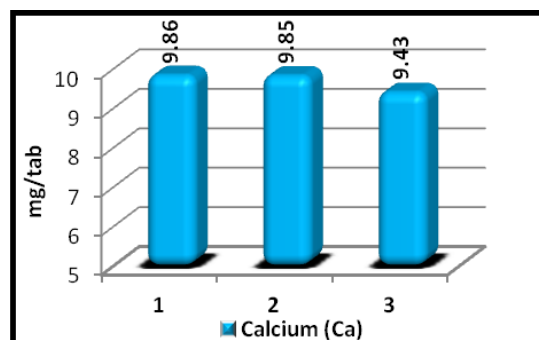
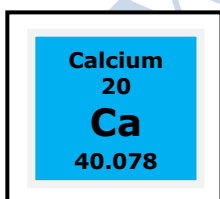
12.0 – 17.0 mg/tab



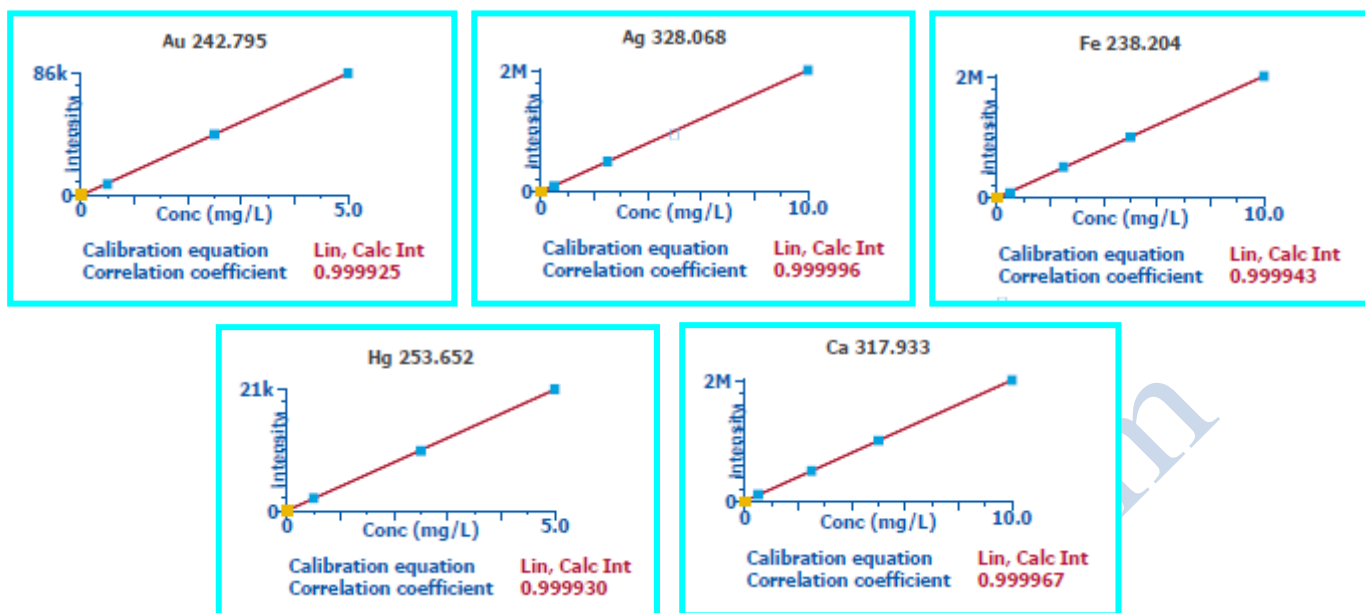
Graphical Representation of Mercury Content in Bruhat Vata Chintamani Rasa (Batch to Batch Consistency) by ICP-OES

## Calcium (Ca)

Not less than 5 mg/tab



Graphical Representation of Calcium Content in Bruhat Vata Chintamani Rasa (Batch to Batch Consistency) by ICP-OES



**Standard Linear Graph of Au, Ag, Fe, Hg & Ca prepared in correlation with NIST Traceable Reference Standard**

|  |   |
|--|---|
| <b>Acute Toxicity</b>                        | Nontoxic when single dose (10 x therapeutic dose) administered orally |
| <b>E. coli</b>                               | Absent/g  |
| <b>P. aeruginosa</b>                         | Absent/g  |
| <b>Salmonella sp.</b>                        | Absent/g  |
| <b>Staphylococcus sp.</b>                    | Absent/g  |
| <b>Total Microbial plate count (TPC)</b>     | NMT $10^5$ c.f.u./g   |
| <b>Total Yeast &amp; Mould Count (TYMC)</b>  | NMT $10^3$ c.f.u./g   |
| <b>Pesticide Residue<sup>†</sup> (OC+OP)</b> | Complies as per API   |
| <b>Aflatoxins B1,B2,G1,G2<sup>†</sup></b>    | Complies as per API   |