

GANDAMALA KANDAN RASA

Monograph No. – 0802374 ver 3.0

Issue No: 03

Date of Issue: 16/11/2016

Text Reference : Ayurvedic Formulary of India, Part 2-16/13

Amendment No : 03

Amendment Date : 24/01/2025

Shelf Life: 5 years

Description

Black colour, round convex coated tablet having SDL mark on one side.

Loss on Drying at 105°

Not more than 6 % w/w

Friability

Not more than 1 % w/w

Disintegration Time

Not more than 60 min.

Hardness

Not less than 2 kg/cm²

Thickness

5.5 ± 0.5 mm

Diameter

8.0 ± 0.5 mm

Average Weight

330 mg ± 5 %

Uniformity of weight

Not more than 2 tablets deviate by more than 5% of the Average Weight and none by more than 10% of the Average Weight.

Ash

Not more than 30 % w/w

Acid insoluble ash

Not more than 9 % w/w

Water soluble extractive

Not less than 20 % w/w

Alcohol soluble extractive

Not less than 10 % w/w

pH (1 % Aq. Solution)

5.5 - 7.5

Elemental Assay

Sulphur (S)

5.20 – 8 mg/tablet

Mercury (Hg)

4.5 – 7.5 mg/tablet

Copper (Cu)

4.5 – 7 mg/tablet

Iron (Fe)

Not less than 6 mg/tablet

Thin Layer Chromatography Solvent system

Toluene : Acetone
(9 : 1)

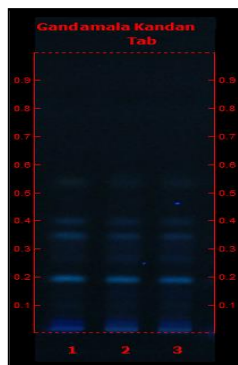
Details

Solvent of Extraction – Methanol

Solvent front – 90 mm

Total No. of Major spots – 6

Visualization – Under UV at 366 nm



Major Spots

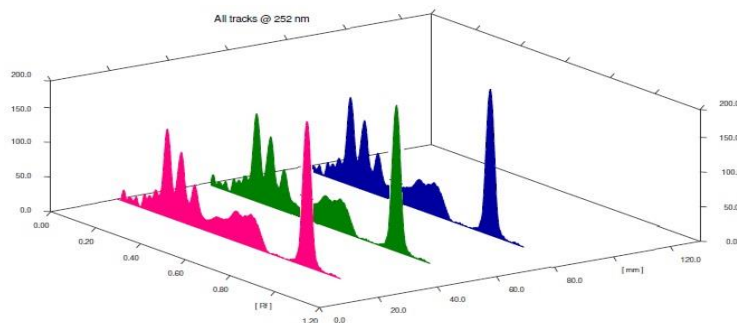
Colour

Approx. Rf.

1	Blue	0.05
2	Light Blue	0.20
3	Light Blue	0.28
4	Light Blue	0.36
5	Light Blue	0.41
6	Light Blue	0.55

Confidential – photocopy prohibited

Note : [†] : These extra tests can be performed on every batch at extra cost. Tests can be ascertained on request.

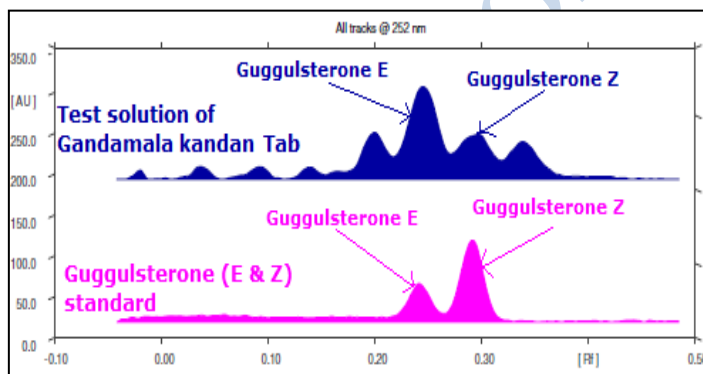
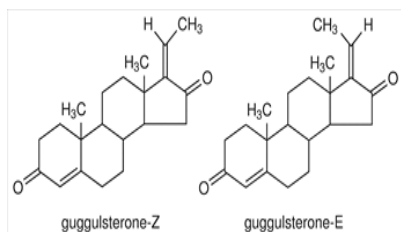


3D Peak Display of Gandamala Kandan Rasa at 252 nm

HPTLC Profile[†]

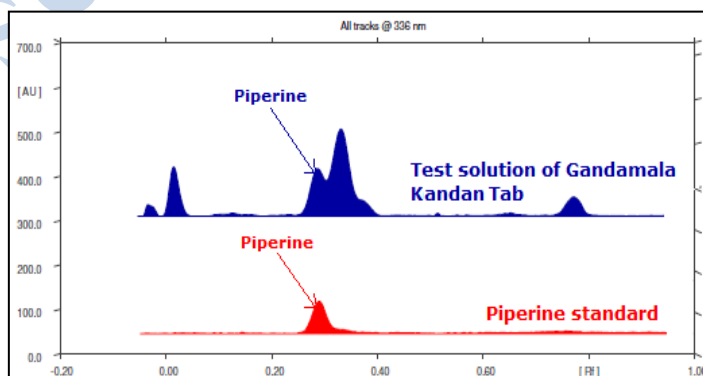
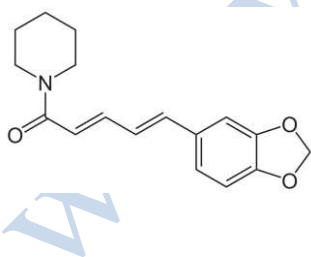
i) Guggulsterone (E & Z)

When examined in the range of 200 nm to 400 nm, the test solution shows absorption maxima at about 252 nm corresponding with Guggulsterone (E & Z) standard.



ii) Piperine

When examined in the range of 200 nm to 400 nm, the test solution shows absorption maxima at about 336 nm corresponding with Piperine standard.



E. coli

Absent/g

P. aeruginosa

Absent/g

Salmonella sp.

Absent/g

Staphylococcus sp.

Absent/g

Total Microbial plate count (TPC)

Not more than 10⁵ c.f.u./g

Total Yeast & Mould count (TYMC)

Not more than 10³ c.f.u./g

Pesticide Residue + (OC+OP)

Complies as per API

Aflatoxins B1,B2,G1,G2 +

Complies as per API

Confidential – photocopy prohibited

Note : [†] : These extra tests can be performed on every batch at extra cost. Tests can be ascertained on request.