

## LAXMIVILAS (NARADEEYA)

Monograph No. – 0800104 ver 3.0

Issue No: 03

Date of Issue: 28/10/2016

Text Reference : Bharat Bhaishajya Ratnakar 4/6333

Amendment No : 03

Amendment Date : 16/07/2024

Shelf Life: 5 years

### Description

Gray to Dark gray colour, round biconvex tablet having SDL mark on one side.

### Loss on Drying at 105°

Not more than 6 % w/w

### Friability

Not more than 1 % w/w

### Disintegration Time

Not more than 30 min.

### Hardness

Not less than 2 kg/cm<sup>2</sup>

### Thickness

5.0 ± 0.5 mm

### Diameter

8.0 ± 0.5 mm

### Average Weight

290 mg ± 5 %

### Uniformity of weight

Not more than 2 tablets deviate by more than 5% of the Average Weight and none by more than 10% of the Average Weight.

### Ash

Not more than 35 % w/w

### Acid insoluble ash

Not more than 20 % w/w

### Water soluble extractive

Not less than 12 % w/w

### Alcohol soluble extractive

Not less than 8 % w/w

### pH (1% Aq. Solution)

5.8 – 7.8

### Elemental Assay

#### Mercury (Hg)

20 – 27 mg/tablet

#### Iron (Fe)

Not less than 3 mg/tablet

#### Sulphur (S)

20 – 28 mg/tablet

### Thin Layer Chromatography Solvent system

Chloroform : Toluene : Methanol  
( 6.8 : 2.8 : 0.4 )

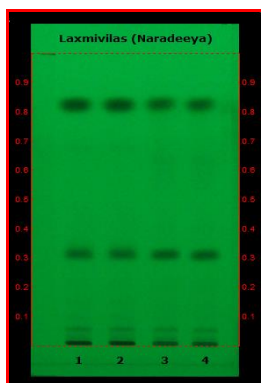
### Details

Solvent of Extraction – Methanol

Solvent front – 90 mm

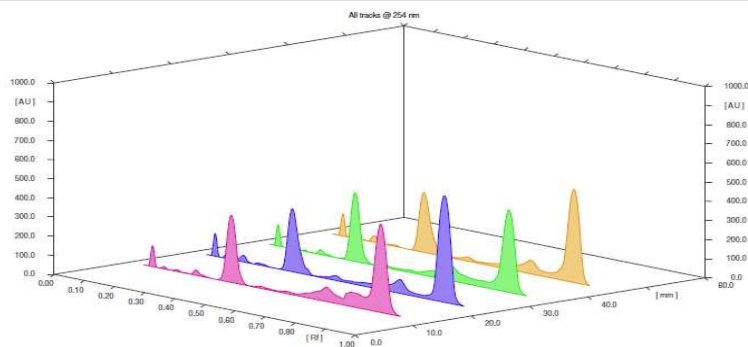
Total No. of Major spots – 3

Visualization – Under UV at 254 nm



Major Spots	Colour	Approx. Rf.
1	Gray	0.06
2	Black	0.31
3	Black	0.83

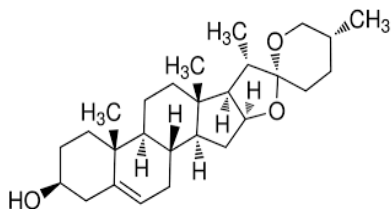




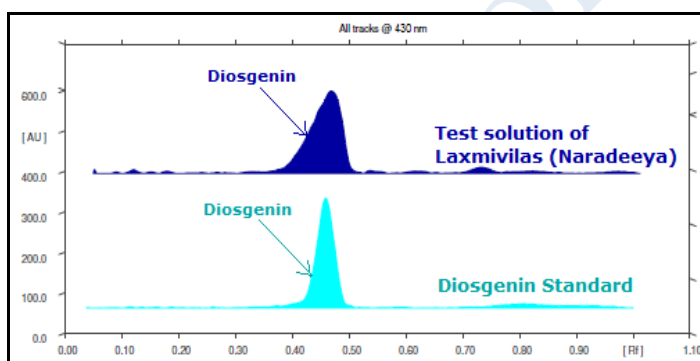
**3D Peak Display of Laxmivilas (Naradeeya) at 254 nm**

## HPTLC Profile<sup>†</sup>

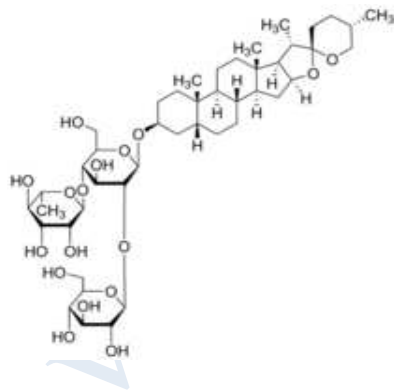
### i) Diosgenin



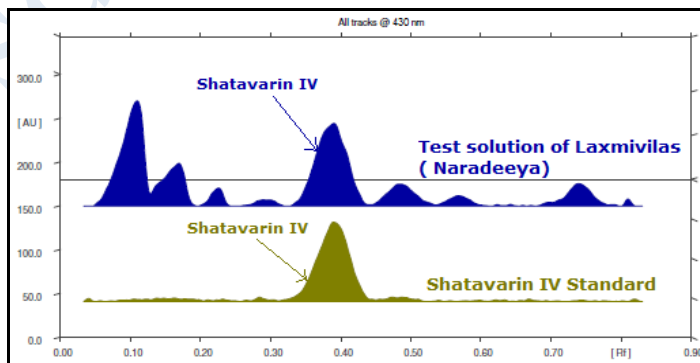
When examined in the range of 400 nm to 700 nm, the test solution shows absorption maxima at about 430 nm corresponding with Diosgenin standard.



### ii) Shatavarin IV



When examined in the range of 200 nm to 400 nm, the test solution shows absorption maxima at about 430 nm corresponding with Shatavarin IV standard.



***E. coli***

Absent/g

***P. aeruginosa***

Absent/g

***Salmonella sp.***

Absent/g

***Staphylococcus sp.***

Absent/g

**Total Microbial plate count (TPC)**

Not more than 10<sup>5</sup> c.f.u./g

**Total Yeast & Mould count (TYMC)**

Not more than 10<sup>3</sup> c.f.u./g

**Pesticide Residue<sup>†</sup> (OC+OP)**

Complies as per API

**Aflatoxins B1,B2,G1,G2<sup>†</sup>**

Complies as per API