

## PATHYADI KADHA

**Monograph No. 100103 ver 3.0**

Issue No: 03

Date of Issue: 25/01/2021

Text Ref : AFI Part II – 4:15

Amendment No : 01

Amendment Date : 16/03/2024

Shelf Life: 3 years

### Description

Slightly dark brown coloured liquid, characteristic fermented odour, taste bitter followed by astringent.

### pH

4.0 – 5.0

### Specific Gravity at 25°

1.05 - 1.15 g/ml

### Brix

20 - 35 %

### Alcohol content

7 – 11 % v/v

### Thin Layer Chromatography Solvent system

Chloroform : Ethyl acetate : Formic acid  
( 5 : 4 : 1.6 )

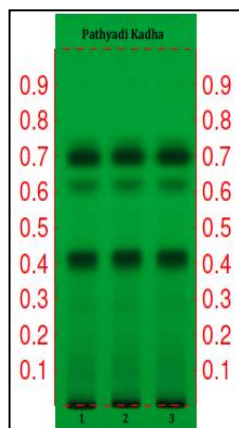
### Details

Solvent of Extraction – Methanol

Distance travelled by solvent front – 90mm

Total No. of Major spots – 6

Detection – Under UV at 254 nm

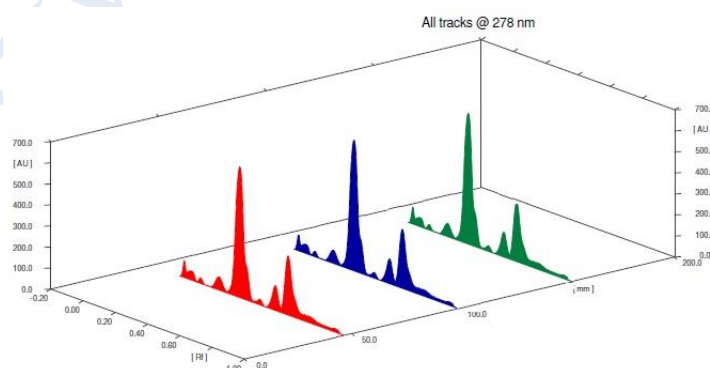


### Major Spots

### Colour

### Approx. Rf.

1	Light Gray	0.11
2	Light Gray	0.29
3	Black	0.42
4	Dark Gray	0.62
5	Black	0.70
6	Gray	0.73



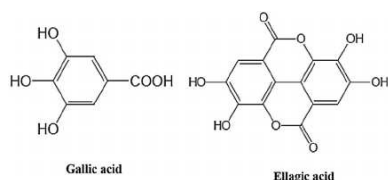
**3D Peak Display of Pathyadi Kadha at 278 nm**

**Confidential - photocopy prohibited**

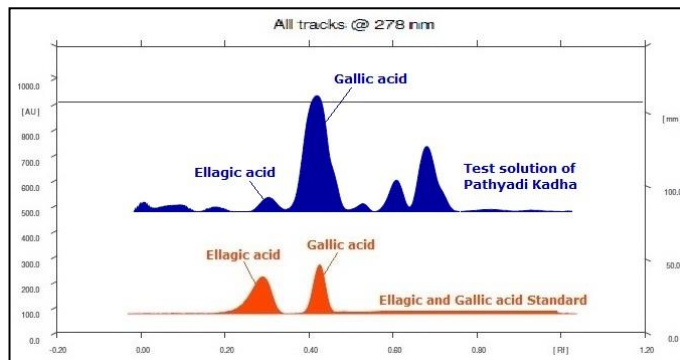
Note : <sup>†</sup> : These extra tests can be performed on every batch at extra cost. Tests can be ascertained on request.

## HPTLC Profile<sup>†</sup>

### i) Total Polyphenols (as Gallic acid & Ellagic acid)



When examined in the range of 200 nm to 400 nm, the test solution shows absorption maxima at about 290 nm for Gallic acid & 278 nm for Ellagic acid corresponding with Gallic acid & Ellagic acid standard.



## Heavy metal

<b>Lead (Pb)</b>	NMT 10 ppm
<b>Mercury (Hg)</b>	NMT 1 ppm
<b>Arsenic (As)</b>	NMT 3 ppm
<b>Cadmium (Cd)</b>	NMT 0.3 ppm
<b><i>E. coli</i></b>	Absent/ml
<b><i>P. aeruginosa</i></b>	Absent/ml
<b><i>Salmonella sp.</i></b>	Absent/ml
<b><i>Staphylococcus sp.</i></b>	Absent/ml
<b>Total Microbial Plate Count (TPC)</b>	NMT 10 <sup>5</sup> c.f.u./ml
<b>Total Yeast &amp; Mould Count (TYMC)</b>	NMT 10 <sup>3</sup> c.f.u./ml
<b>Pesticide Residue<sup>†</sup> (OC+OP)</b>	Complies as per API
<b>Aflatoxins B1,B2,G1,G2</b>	Complies as per API