

## PITTASHEKHAR RASA

Monograph No. – 1902624 ver 3.0

Issue No: 03

Date of Issue: 28/10/2016

Text Reference : Ayurvedic Proprietary Medicine

Amendment No : 02

Amendment Date : 05/03/2025

Shelf Life: 5 years

### Description

Green colour, round biconvex film coated tablets with SDL mark on one side.

### Loss on Drying at 105°

Not more than 8 % w/w

### Friability

Not more than 1 % w/w

### Disintegration Time

Not more than 60 min.

### Hardness

Not less than 2.5 kg/cm<sup>2</sup>

### Thickness

5.0 ± 0.5 mm

### Diameter

8.0 ± 0.5 mm

### Average Weight

325 mg ± 5 %

### Uniformity of weight

Not more than 2 tablets deviate by more than 5% of the average weight and none by more than 10% of the average weight.

### Ash

Not more than 35 % w/w

### Acid insoluble ash

Not more than 7 % w/w

### Water soluble extractive

Not less than 25 % w/w

### Alcohol soluble extractive

Not less than 10 % w/w

### pH (1% Aq. solution)

7.8 – 9.6

### Elemental assay

#### Gold (Au)

0.25 – 0.65 mg/tablet

#### Copper (Cu)

0.15 – 0.55 mg/tablet

#### Mercury (Hg)

0.5 – 0.8 mg/tablet

### Thin Layer Chromatography

#### Solvent system

Toulene : Ethyl acetate : Glacial acetic acid  
( 9 : 1 : 0.1 )

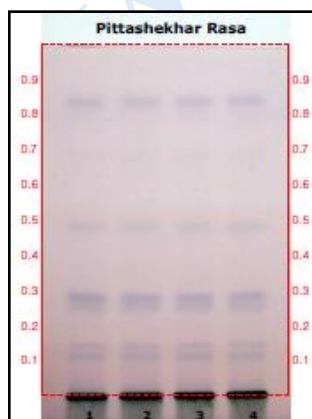
Solvent of Extraction – Methanol

Solvent front – 90 mm

Total No. of Major spots – 6

Visualization – After spraying Anisaldehyde H<sub>2</sub>SO<sub>4</sub>

#### Details



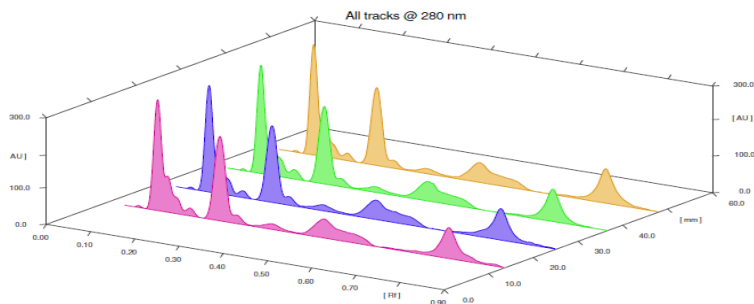
#### Major spots

#### Colour

#### Approx. Rf.

1	Light Violet	0.12
2	Light Violet	0.14
3	Violet	0.24
4	Violet	0.29
5	Gray	0.48
6	Violet	0.85

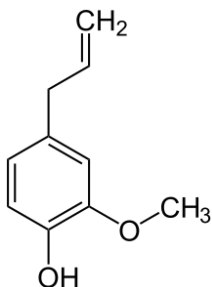




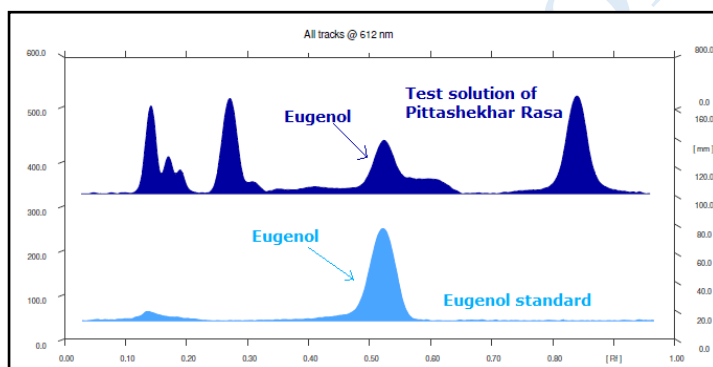
**3D Peak Display of Pittashekhar Rasa at 280 nm**

## HPTLC Profile +

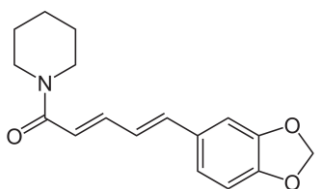
### i) Eugenol



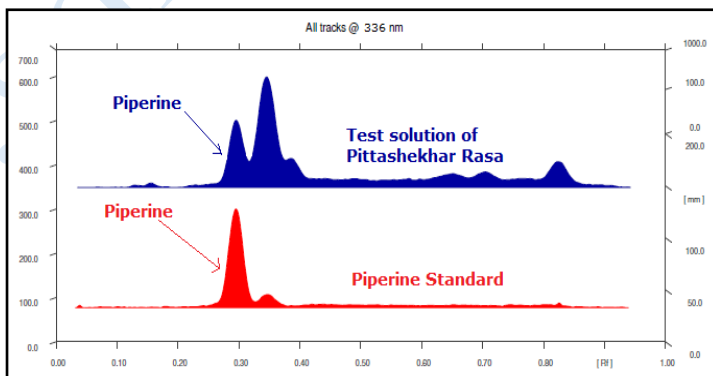
When examined in the range of 400 nm to 700 nm, the test solution shows absorption maxima at about 612 nm corresponding with Eugenol standard.



### ii) Piperine



When examined in the range of 200 nm to 400 nm, the test solution shows absorption maxima at about 336 nm corresponding with piperine standard.



***E. coli***

Absent/g

***P. aeruginosa***

Absent/g

***Salmonella sp.***

Absent/g

***Staphylococcus sp.***

Absent/g

**Total Microbial plate count (TPC)**

Not more than 10<sup>5</sup> c.f.u./g

**Total Yeast & Mould count (TYMC)**

Not more than 10<sup>3</sup> c.f.u./g

**Pesticide Residue + (OC+OP)**

Complies as per API

**Aflatoxins B1,B2,G1,G2 +**

Complies as per API

**Confidential - photocopy prohibited**

Note : + : These extra tests can be performed on every batch at extra cost. Tests can be ascertained on request.